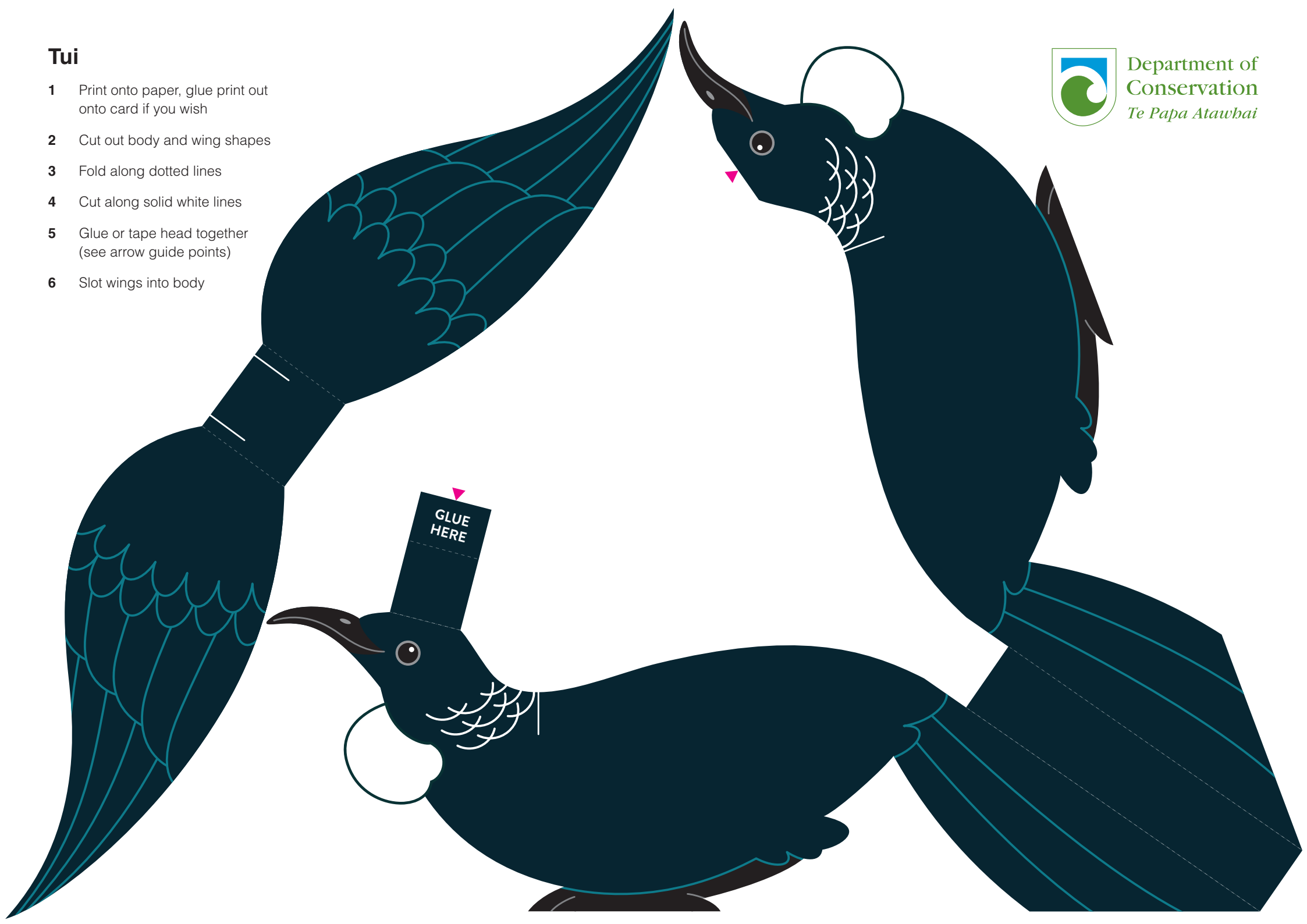


Tui

- 1 Print onto paper, glue print out onto card if you wish
- 2 Cut out body and wing shapes
- 3 Fold along dotted lines
- 4 Cut along solid white lines
- 5 Glue or tape head together (see arrow guide points)
- 6 Slot wings into body



Department of
Conservation
Te Papa Atawhai



Kereru

- 1 Print onto paper, glue print out onto card if you wish
- 2 Cut out body and wing shapes
- 3 Fold along dotted lines
- 4 Cut along solid white lines
- 5 Glue or tape head together (see arrow guide points)
- 6 Slot wings into body



Department of
Conservation
Te Papa Atawhai



Whio

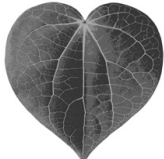
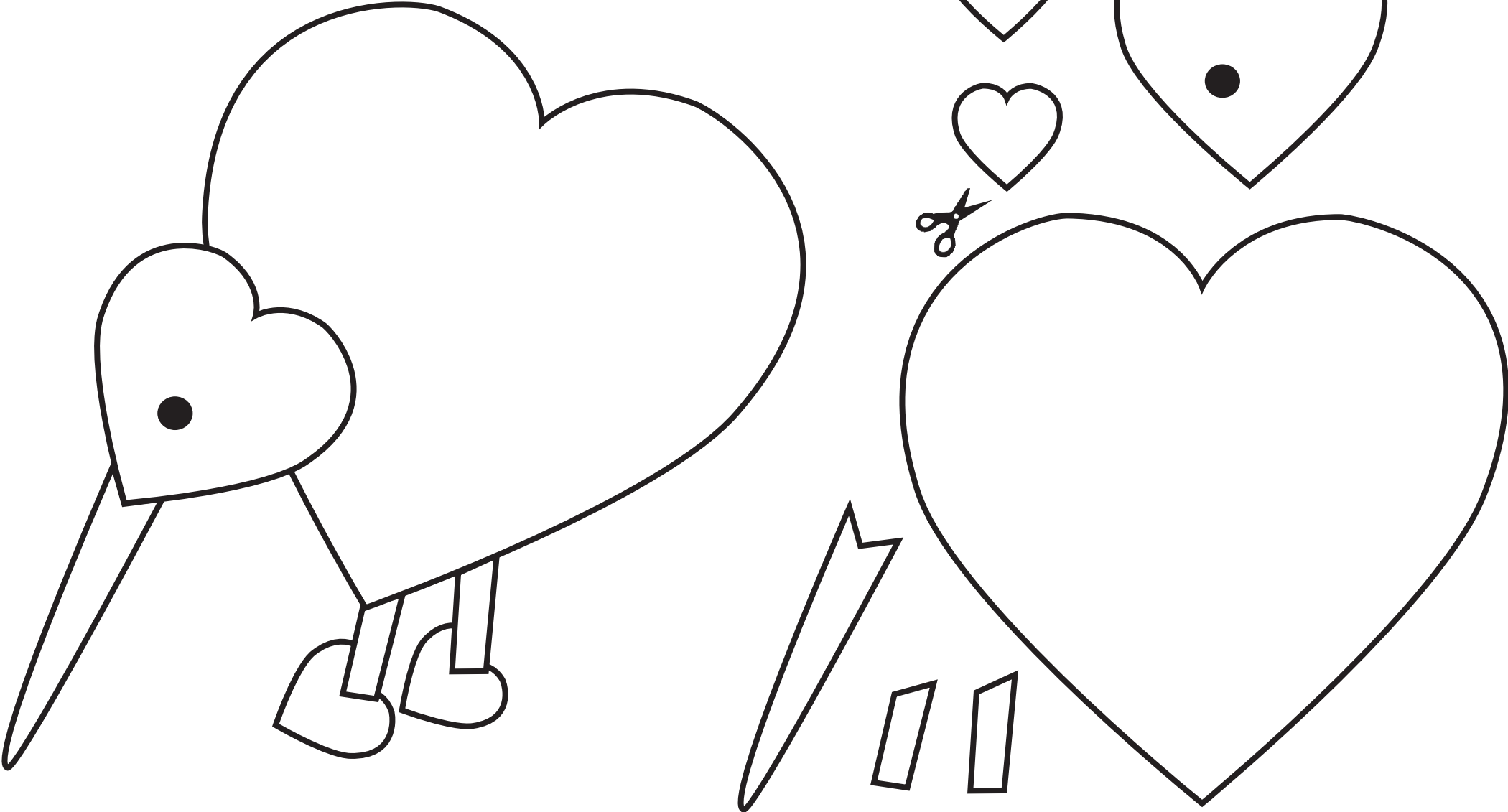
- 1 Print onto paper, glue print out onto card if you wish
- 2 Cut out body and wing shapes
- 3 Fold along dotted lines
- 4 Cut along solid white lines
- 5 Glue or tape head and tail points together (see arrow guide points)
- 6 Slot wings into body



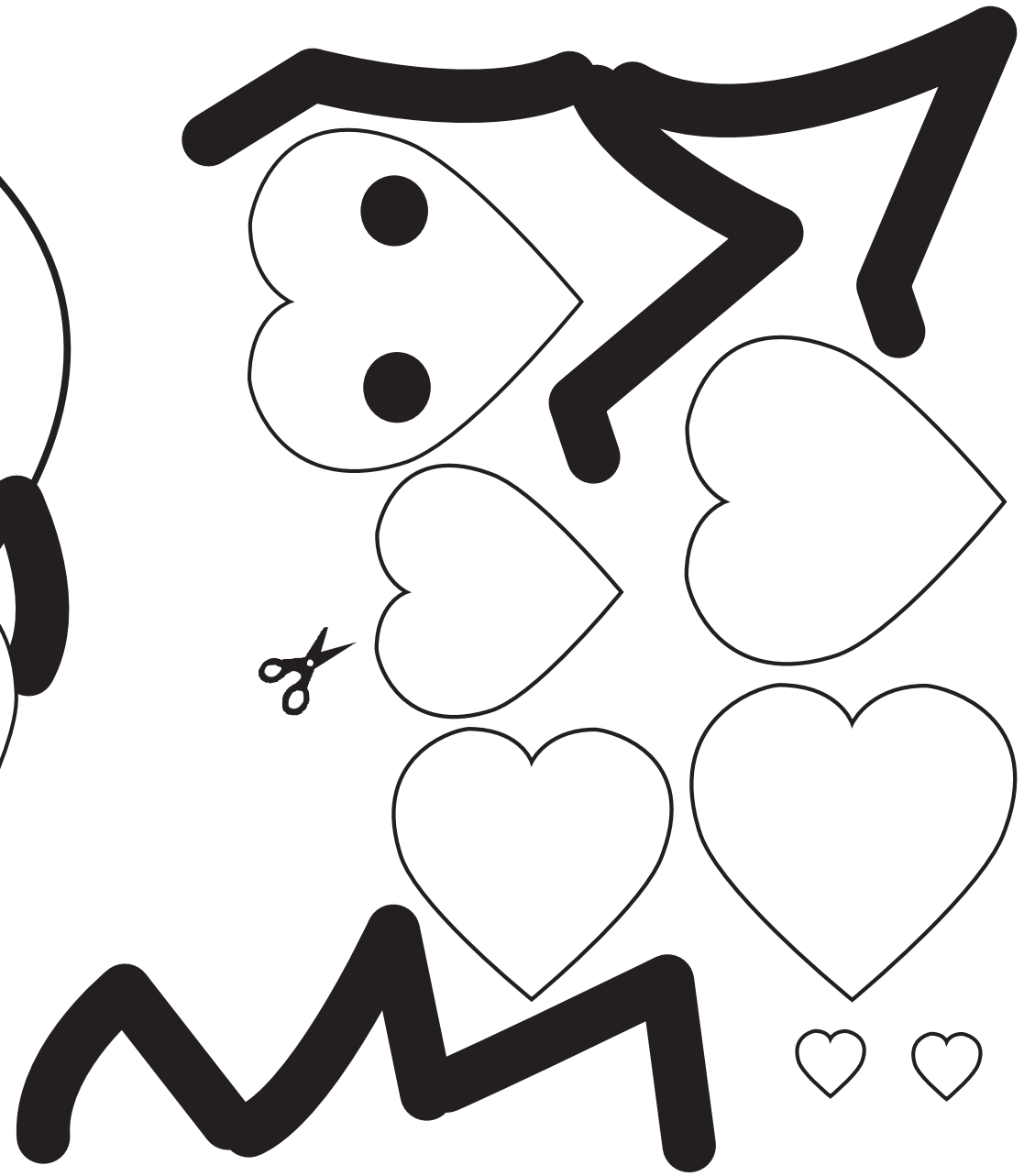
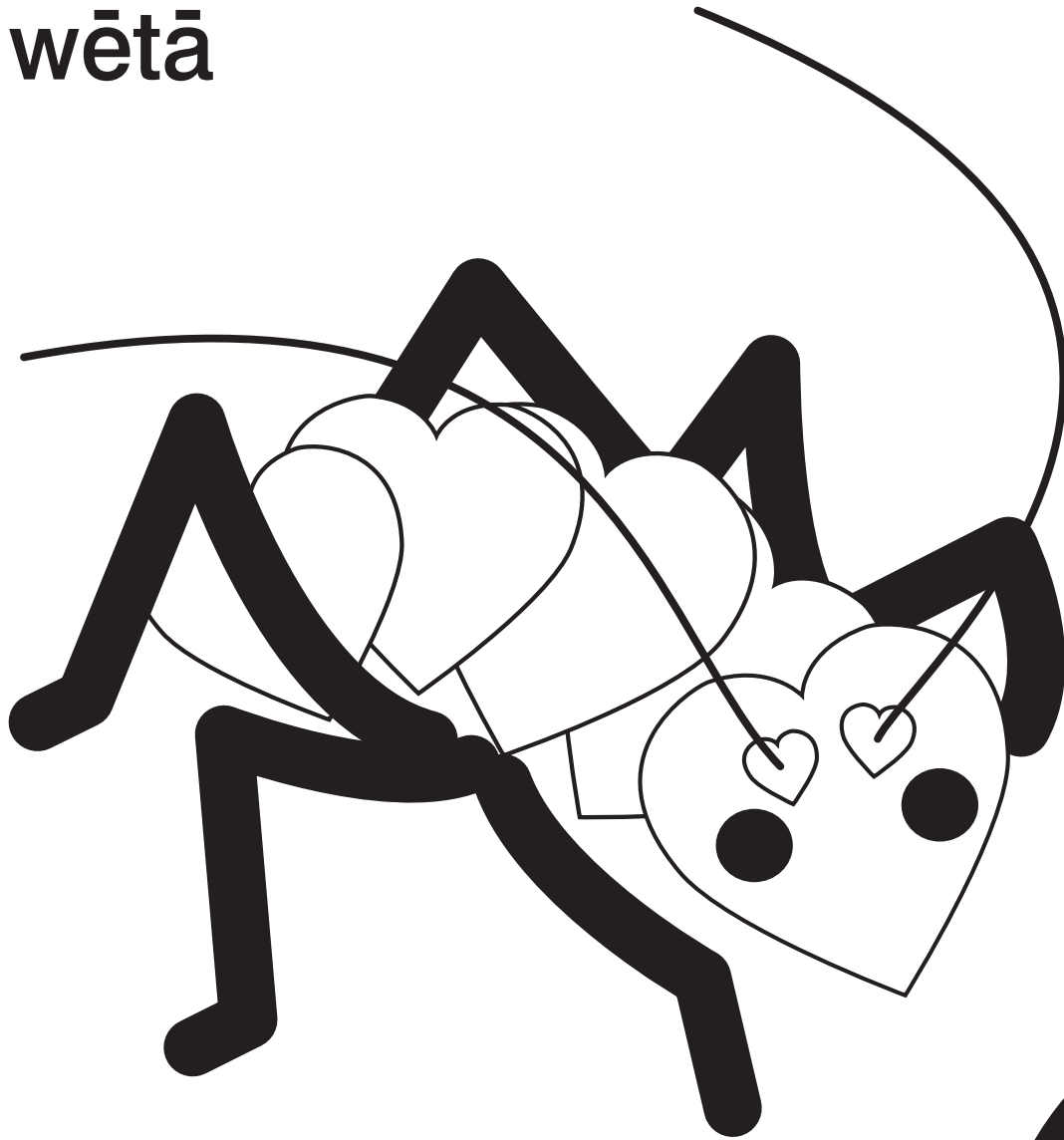
Department of
Conservation
Te Papa Atawhai



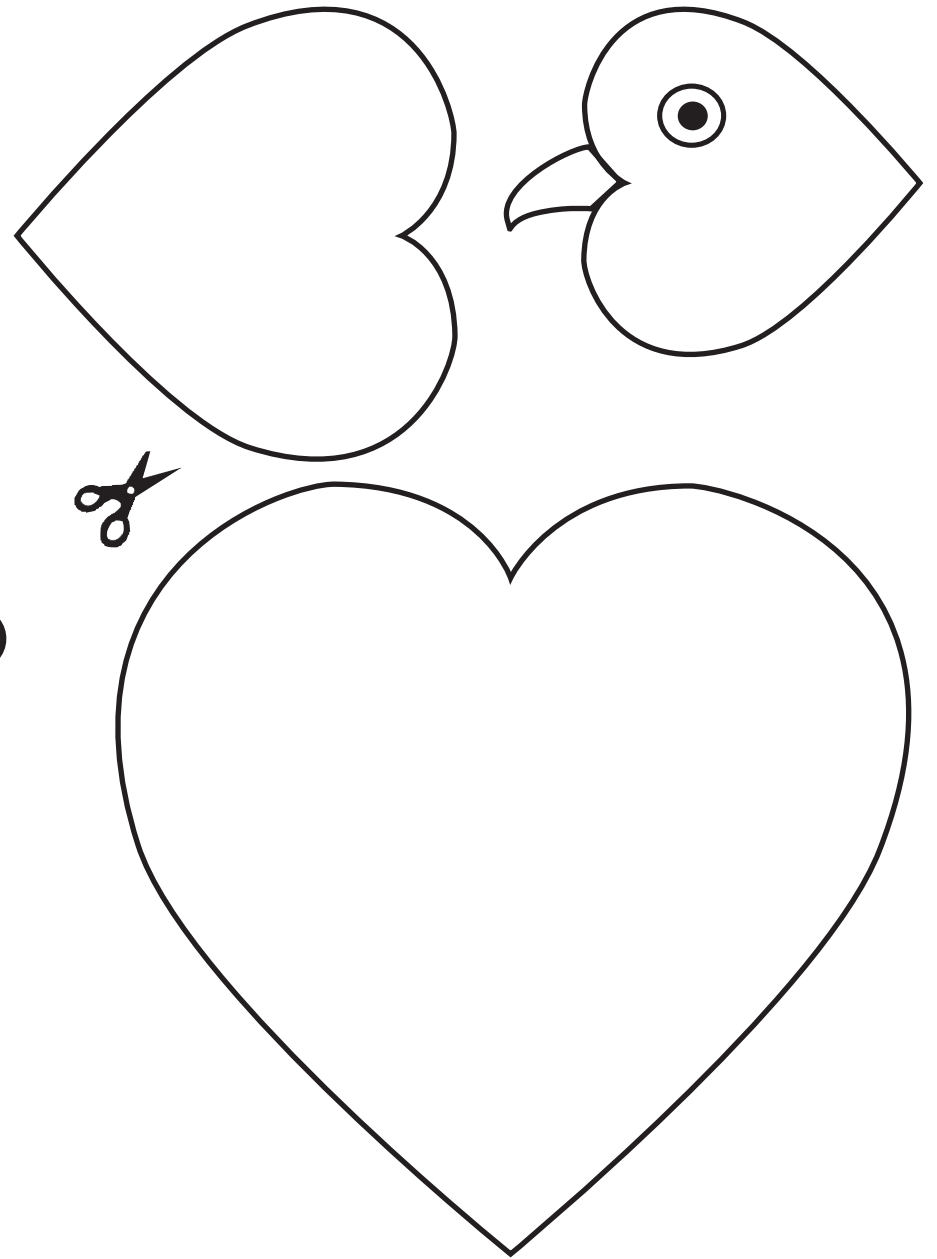
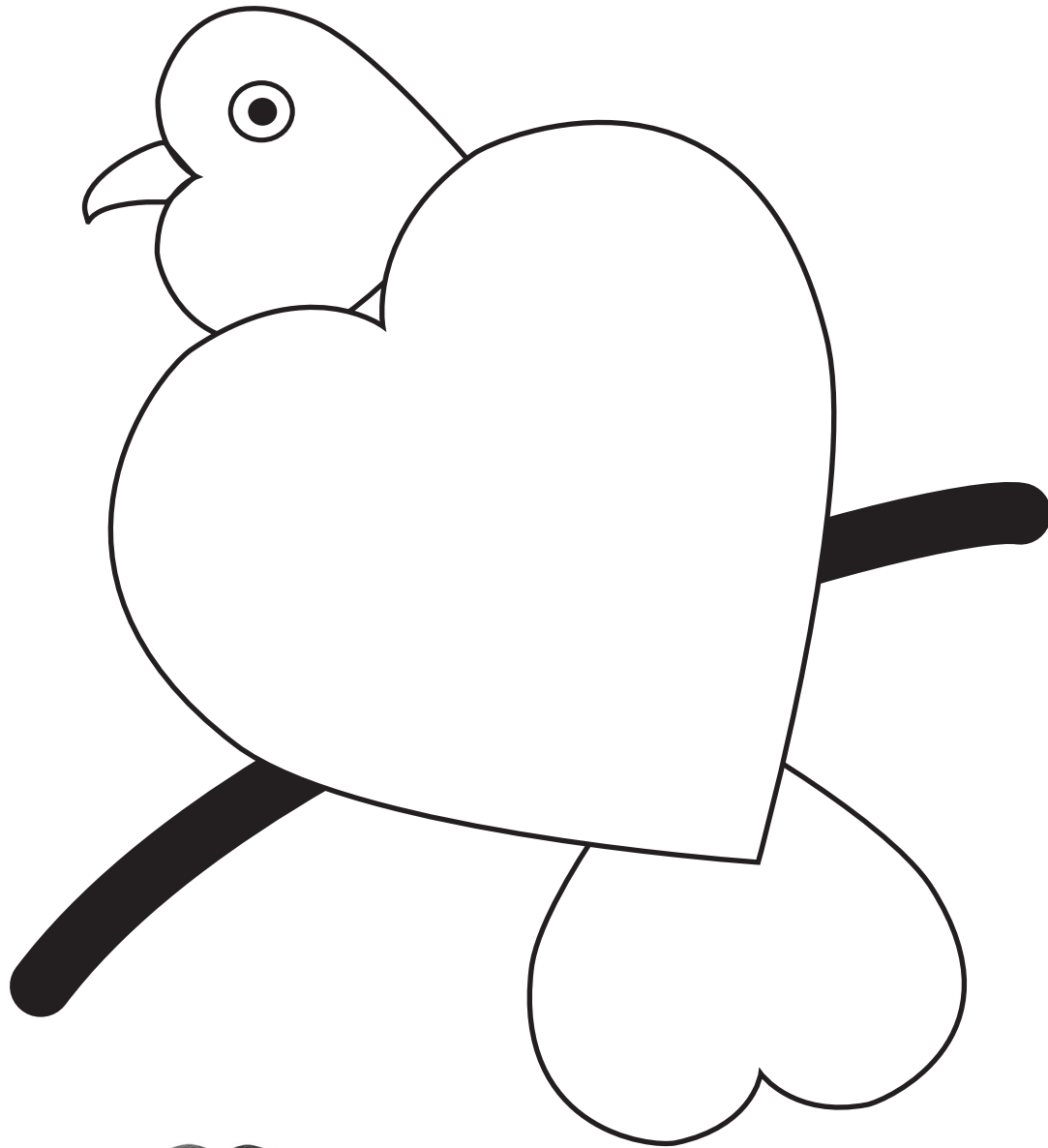
kiwi



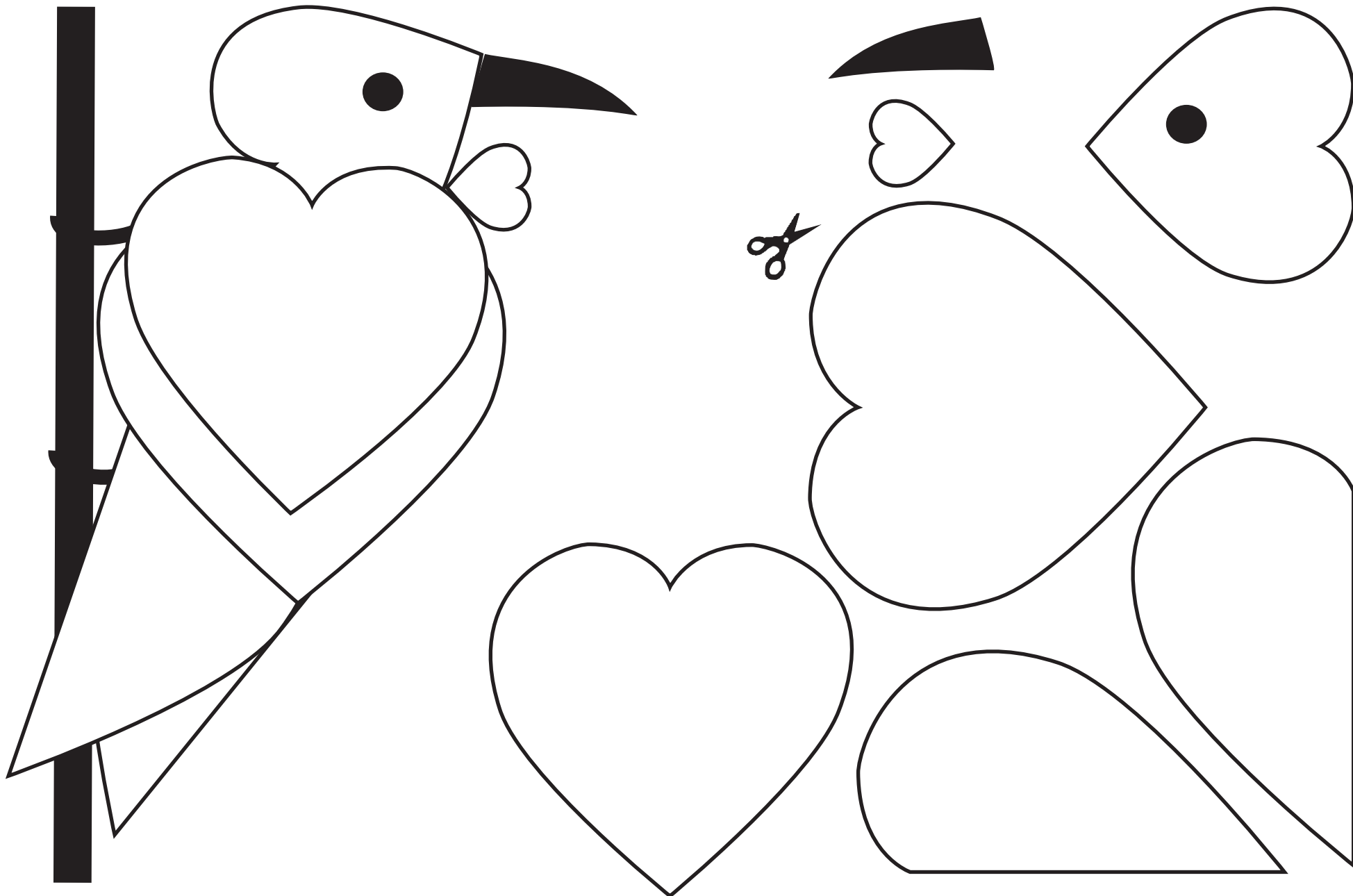
wētā



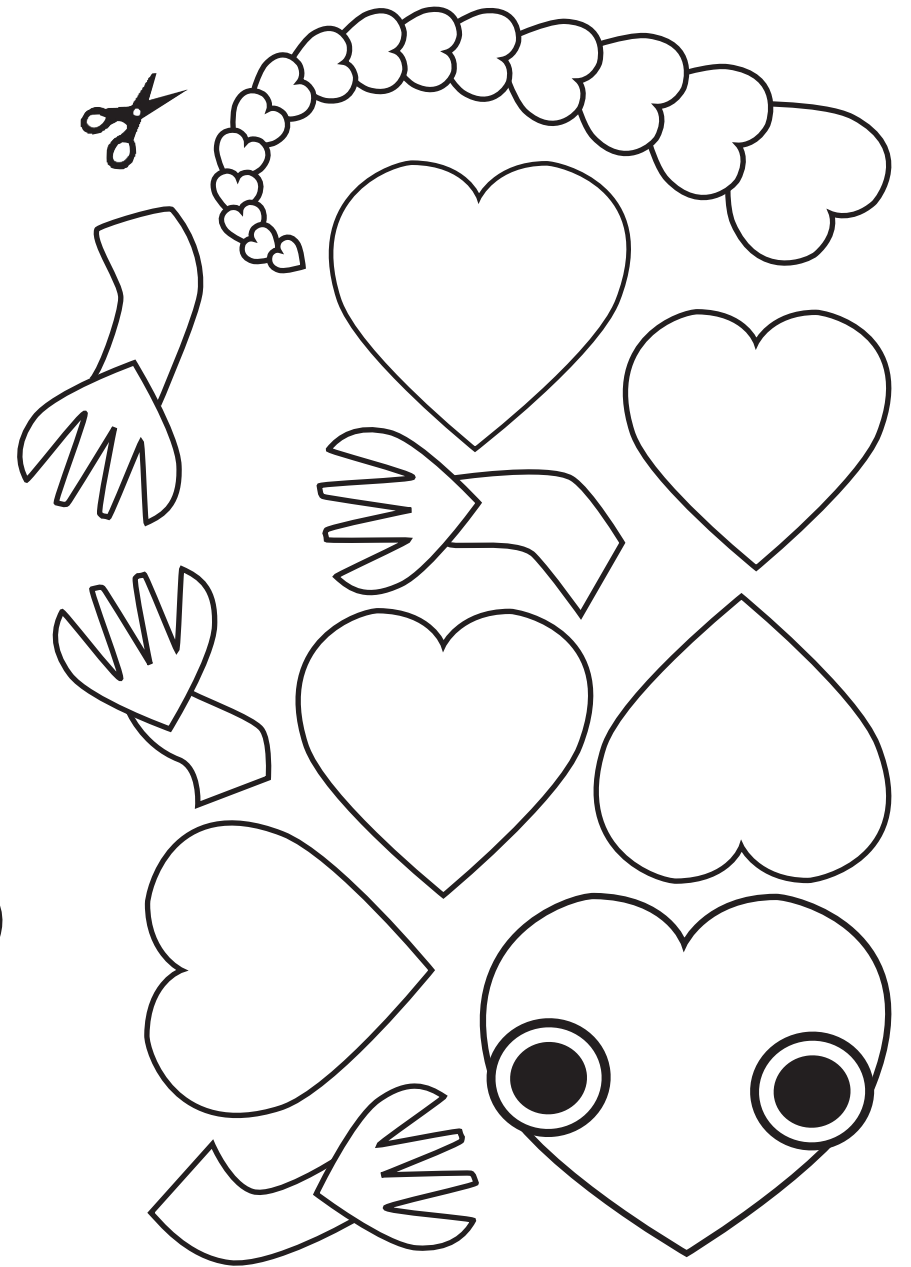
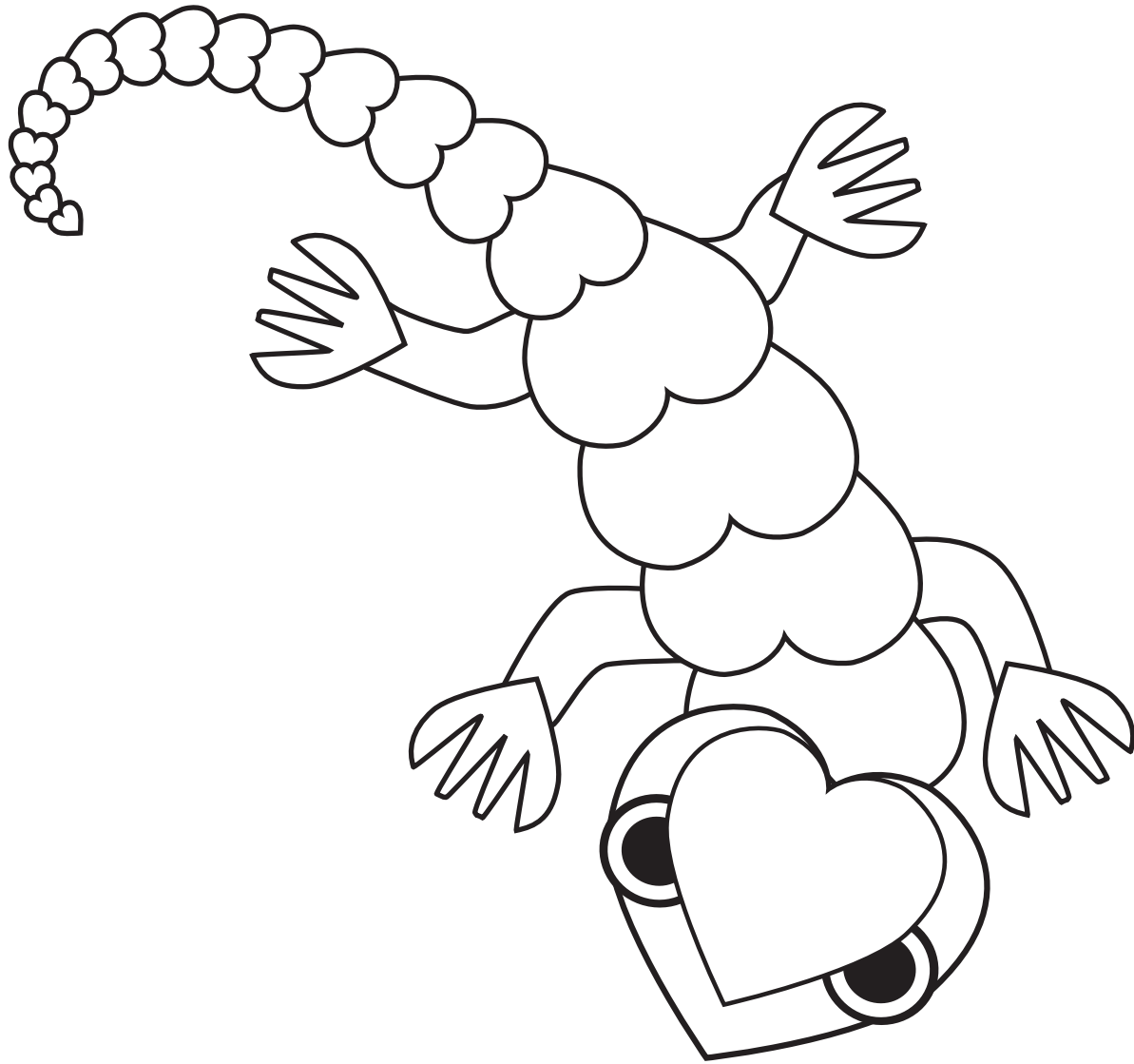
wood pigeon/kererū



tūī



gecko/moko-pāpā



morepork / ruru

